



## March Newsletter



### Hello, March •

The bridge between winter and spring: Join us as we transition from winter's darkness into the colors of spring and all the new hope it can bring.

### Program Events •

Explore the care, connection, and community available through our virtual and in-person programs.

2026

## Upcoming Events ♥

MAR 3	DADCOLOGY FIRESIDE CHAT 8 pm eastern	MAR 14	CONNECTIONS CHOP 10 am eastern
MAR 6	BEREAVED RETREAT MARBLE FALLS, TX March 6 thru 8	MAR 18	CONNECTIONS DFCI BOSTON 7 pm eastern
MAR 10	COFFEE BREAK WEEKDAY 10 am eastern	MAR 19	NIGHTCAP BEREAVED SUPPORT 7 pm eastern
MAR 10	CONNECTIONS LEVINE 6 pm eastern	MAR 21	DADCOLOGY FIRESIDE CHAT 11 am eastern
MAR 11	CONNECTIONS COHEN CHILDREN'S 7 pm eastern	MAR 28	YOGA AND CONVERSATION 10 am eastern

[Register & Find More Momcology Events](#)

### Retreat Announcements •



#### Our 2026 Retreat Season Is Now Underway

We kick off the season this weekend in Texas with a special retreat for bereaved moms.

Here's what's coming up later this year:

**Pescadero, California**  
May 15-17  
On & Off Treatment

Application Now Open

**Sabillasville, Maryland**  
August 21-23  
On & Off Treatment

Application Coming Soon

[Apply or Learn More About Momcology Retreats](#)

### National Social Worker Month •



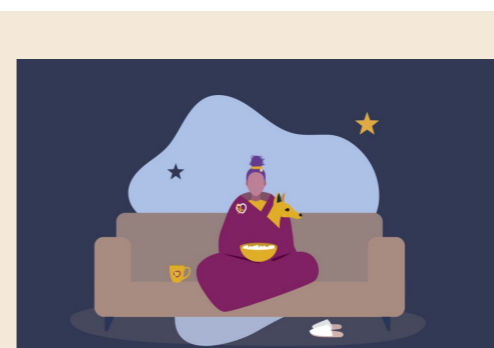
This month, we honor the extraordinary social workers who walk alongside families facing childhood cancer every day. They are often the steady presence in the storm by helping caregivers navigate complex medical systems, access essential resources, process overwhelming emotions, and make decisions no family ever expects to face.

At Momcology, we see the impact woven through every corner of our collaborative work. Our flagship programs, highlighted below, are a sample of the ways that we collaborate to best support our community.



**Social Work & Connections Programming**  
Psychosocial staff helps to implement Momcology's hospital-based caregiver support groups into their hospital systems and treatment centers. All Connections programming is co-facilitated by hospital staff and peer leaders.

**Social Work & Caregiver Lounge Webinars**  
Our ongoing webinar series is hosted by psychosocial staff including social workers who work directly with pediatric cancer families. To date, we've had over 15 professionals present topics of meaning to our community.



**Social Work & Momcology Retreats**  
The Momcology retreat curriculum was developed and is delivered in partnership with social workers during our immersive retreat weekends, helping build trust and adding meaningful depth to the retreat experience.

Many caregivers find their way to our community because a social worker recognized the need for peer support and pointed them toward connection through Momcology. This month, we thank social workers for their advocacy, compassion, and unwavering commitment to pediatric oncology families and Momcology.

### Moms Take A Stand •



#### June 2026 | Registration Now Open

Momcology & Alex's Lemonade Stand Foundation invite you to host a lemonade stand this June and join a community dedicated to raising critical funds and awareness for research. To date, over \$440,000 has been raised by our collaborative campaign!

[Visit Moms Take A Stand](#)

It's a big year for Moms Take a Stand! Help us surpass a benchmark of half a million dollars raised by our community for childhood cancer research.

### Product of the Month •



Stunning color. Gold ribbon etching. Meaningful impact.

Every tumbler directly supports families facing childhood cancer and right now, it's on SALE.

Use offer code **MAR25** at checkout for 25% off

[Shop & Love Another Mother](#)

### Coming in April | Mother's Day •

Over 30,000 gifts sent with Love & Hope since 2015.

Stay tuned for this year's gift and how to register by updating your membership profile.

Learn more about our sponsors and this beloved Momcology annual tradition.



[Mother's Day Campaign](#)



Rainbows are promises. They remind us that storms do not get the final word.

[Contact Us](#)

